

Complete monitoring system for the automatic, continuous measurement of color in potable water and surface water.

- For the continuous, absorptive online determination of color per **ISO 7887 (Pt) / ISO 6271 (Cr-Co) / SO 6271:2015 (Pt-Co)**.
- Available in separate measuring ranges and measuring units:
  - 0 to 50** (Hazen or mg/l Pt or mg/l Cr-Co) or
  - 0 to 100** (Hazen or mg/l Pt or mg/l Cr-Co) or
  - 0 to 250** (Hazen or mg/l Pt or mg/l Cr-Co)
- Complete system including measurement and control electronics, measuring unit, flow indicator, reaction chamber, reagent dosing system and a cleaner system.
- Robust, high quality analyzer cabinet painted stainless steel, 316L.
- Automatic, electrical zero measurement prior to each measurement cycle.
- Automatic cell cleaning.
- 2 analog and 6 digital outputs for alarms for process values and diagnostic alarms for each sample stream.
- RS485 Modbus/JBUS RTU interface.
- Large back-lit touchscreen color LCD display for the reading of all measured values and status information simultaneously.
- Easy menu-guided operation in English or French.



Analyzer	Seres OL Topaz Color (0-50 or 0-100 or 0-250 Hazen [or mg/l Pt or Cr-Co])	SOL-55.351.000
Range Configuration	0-50 or 0-100 or 0-250	Contact Sales
Unit Configuration	Hazen or mg/l Pt or mg/l Cr-Co	Contact Sales
Configurations	2-Channel Setup	SOL-83.590.020
	4-Channel Setup	SOL-83.590.040
	6-Channel Setup	SOL-83.590.060
	Ethernet Interface (TCP/IP) Please, inform SERES about automatic or fixed IP-address (give address)	SOL-81.410.020
Options	1-Year Spare Part Package "Basis" (Analyzer + 1 <sup>st</sup> channel)	SOL-84.110.070
	1-Year Spare Part Package "Multi-Channel" (add once if multi-channel config. was selected)	SOL-84.110.150
	Reagent Shelf in SS316L	SOL-89.610.010



## Color Measurement

### Absorptive method:

The measurement principle is based on the comparison of the color of a sample to that of a scale of Platinum-Cobalt or Cr-Co solutions.

Reaction time 4-5 min.

### Sensors/Measurement Equipment

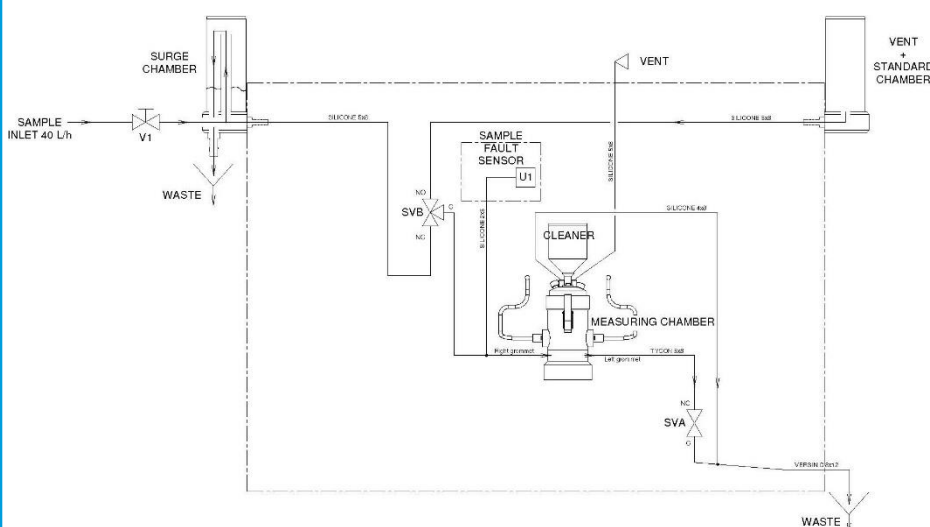
Detection wavelength 375 nm  
Temperature controlled measuring chamber

Analyzer	Measuring range
<b>Topaz Color</b>	<b>0-50 / 0-100 / 0-250 Hazen</b>
Limit of Detection	4 H
Repeatability	± 1-2 % FS
Precision	± 1-2 % FS
Interferences	Turbidity

Automatic baseline adjustment.

Sample flow surveillance.

## Seres OL Topaz Color Measurement Scheme



## Specifications and Functionality

### Power supply

Voltage: 110 - 240 VAC  
Frequency: 50 /60 Hz  
Power consumption: max. 300 VA

### Operation

Display: Color LCD, 7", touch-screen

Display of process value, alarm status and time during operation.

Smart and intuitive interface based on separate menu sections: "Measurement", "Diagnostic" and "Tools".

User menus in English and French.

Password protection and storage of data records.

Storage and graphical display of measurement history.

### Alarm Relays

1 summary alarm for "analyzer failure"

Maximum load: 1A / 24 V

### Relay Outputs

2 potential-free contacts for each channel programmable as limit switches for measuring values (high/low thresholds)

1 sample flow alarm for each channel

1 output for indication of the active sample stream for each channel.

1 output for maintenance indication.

Rated load: 1A / 24 V

### Signal inputs

One input for "stop command end of cycle".

### Signal outputs

2 programmable signal outputs for measured values (freely scalable, linear).

Current loop: 4 - 20 mA

### Communication interface

RS485 interface (galvanically separated) with Modbus/JBUS RTU protocol included in standard.

Ethernet interface (TCP/IP) optional.

## Analyzer Data

### Sample conditions

Flow rate: min 30 l/h  
optimum 40 l/h  
Temperature: 5 to 40 °C  
Inlet pressure<sub>Abs.</sub> (25 °C): 0.1 up to 2.0 bar  
Outlet pressure: pressure-free  
Particle size: < 20 µm

### Ambient Conditions

Temperature: 5 to 40 °C  
Humidity: 10 to 80% rel.  
Installation in a closed, protected, tempered room is recommended

### Sample connections

Sample inlet: 1/4" BSP F  
Sample outlet: soft tubing D INT 9  
Sample outlet waste: soft tubing D INT 12  
Sample outlet (Multi-ch.): soft tubing D INT 19

### Wall cabinet

Dimensions: 780 x 570 x 370 mm  
Material: Stainless Steel 316L  
Total weight: 35 kg  
Protection degree: IP 55

## Reagent specifications

**No reagents required.**

